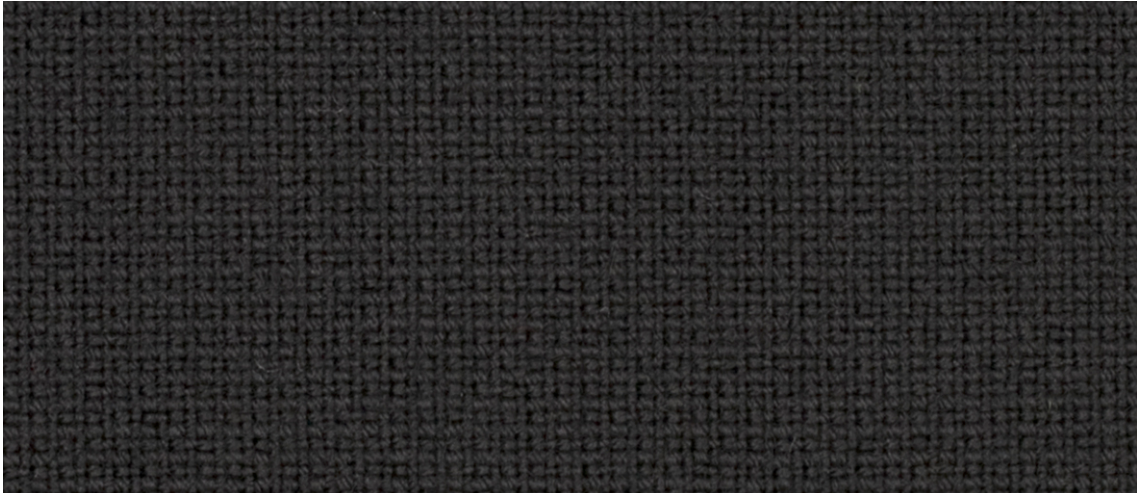


# Gabriel®

## FAME

Colour 60999

Fame is a unique woollen upholstery fabric with a wearability of 200,000 Martindale, and at the same time is extra soft and stretchable. The colour scale is very elegant and vibrant.



### FAME SPECIFICATIONS

|  |  |  |
|--|--|--|
| <b>Dessin no.</b>                        | 2409   |  |
| <b>Fields of application</b>             | contract   |  |
| <b>Material</b>                          | 95% New Zealand wool / 5% polyamide  |  |
| <b>Weight</b>                            | g/m  | 630  |
|  | oz/lin.yd  | 20.32  |
| <b>Width</b>                             | cm   | 140  |
|  | inches   | 55   |
| <b>Abrasion resistance</b>               | rubs martindale (EN ISO 12947-2)   | 200,000  |
|  | rubs martindale (ASTM D4966-02)<br>(heavy duty upholstery)   | 140,000  |
| <b>Pilling</b>                           | scale 1-5, max. 5 - EN ISO 12945-2   | 4  |
| <b>Colour fastness to light</b>          | scale 1-8, max. 8 - EN ISO 105-B02   | 5-7  |
| <b>Colour fastness to rubbing</b>        | scale 1-5, max. 5 - EN ISO 105x12 (wet/dry)  | 4-5/4-5  |
| <b>Maintenance</b>                       | dry cleaning P(S)  |  |
|  |  |  |
| <b>US ACT</b>                            | <ul style="list-style-type: none"> <li>• AATCC 16 Light fastness</li> <li>★ ASTM D4970 Pilling</li> <li>✘ ASTM D4966 Martindale (heavy duty)</li> <li>✘ CA TB 117-2013</li> <li>● AATCC 8 or 116 Wet/dry crocking</li> </ul> | <ul style="list-style-type: none"> <li>pass</li> <li>pass</li> <li>pass</li> <li>pass</li> <li>pass</li> </ul> |
| <b>Acoustic test air flow resistance</b> | EN 29053   |  |
| <b>Acoustic test sound absorption</b>    | ISO 354  |  |

|   |  |
|---|--|
| <b>Flammability</b>                               | <ul style="list-style-type: none"> <li>BS EN 1021-1 Cigarette</li> <li>BS EN 1021-2 Match</li> <li>BS 5852 Crib 5</li> <li>CA TB 117-2013</li> <li>Class Uno UNI 9175 Class 1 I</li> <li>EMME</li> <li>AM 18 - NF D 60-013-(only for fabric)</li> <li>BS 5852 Part 1 0,1 Cigarette &amp; match</li> <li>ÖNORM B 3825-B1-3800-Q1 UK</li> <li>IMO MSC 307(88) Annex 1 part 8</li> <li>MED Certificate IMO</li> <li>BS 476 Part 7, class 1</li> </ul> <p>Will also pass other flammability standards. Flame retardant performance is dependent upon the foam used.<br/>Contain no flame retardant chemical.</p> |
| <b>Flammability with flameretardant treatment</b> | <ul style="list-style-type: none"> <li>DIN 4102 B1 (flame retardant)</li> <li>NF P 92-503 M2 (flame retardant)</li> <li>BS 7176 Medium hazard (flame retardant)</li> <li>BS 5852 Crib 5 (flame retardant)</li> </ul>   |
| <b>Environment</b>                                | <ul style="list-style-type: none"> <li>Oeko-Tex</li> <li>EU Ecolabel</li> </ul>  |
| <b>Design</b>                                     | Inger Mosholt Nielsen  |
| <b>Colours</b>                                    | Cenk Kivrikoglu  |

Please be aware that the colour shades can appear different from the real fabric colours.